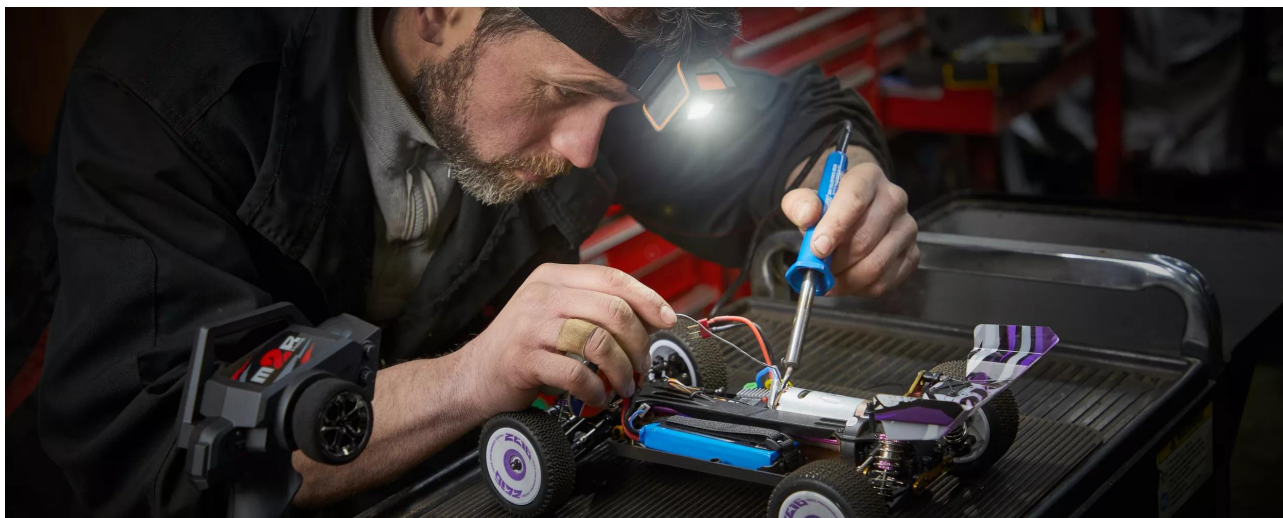


# LEDinspect HEADTORCH250

Inspectionlights



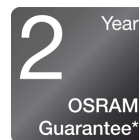
**Motion Sensor Activation**  
Easily control light during hands free use



**250 Lumen**  
Two light functions High: Up to 250 lm Low: Up to 140 lm

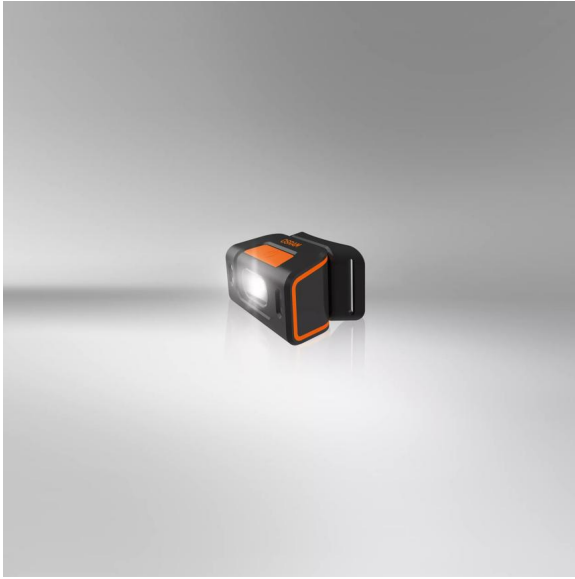


**60° Flex**  
Adjustable light angle to get the light to the desired position



**2-year-OSRAM guarantee\***  
Systematic quality assurance measures underpin the premium workmanship and functionality of our products. Innovative technology and excellent quality really pay dividends for our customers.

## Product family datasheet



### Light is versatile

This high-quality headtorch from OSRAM is perfect for professional and private use. With two light functions - high up to 250lm and low up to 140lm, there is a light output to suit a wide variety of tasks. The integrated motion sensor technology allows for hassle-free, hands-free working and the option for the 60° tilt angle provides flexibility to give light where needed. The rechargeable battery allows up to 3.5h of operation at high power or up to 6h at low power. A USB Type-C charging cable and the corresponding power adaptor are included in the scope of supply. In accordance with IP54 protection rating, this headtorch has protection against ingress of particles and against splashing water and is tested for impact resistance in accordance with IK08. The LEDinspect HEADTORCH 250 has soft pads inside and additionally an adjustable strap for optimal wearing comfort and is therefore ideal as a light for craft activities, car repairs and in everyday life. In addition, OSRAM grants a 2-year guarantee\*

## Product family datasheet

### Technical data

	Product information	General Product Information	Electrical Data	
Product description	Application (Category and Product specific)	Global order reference	Nominal wattage	Nominal voltage
INSPECTION LAMP	LED inspection lights	LEDIL404	5 W	3.7 V

	Photometric Data			Physical Attributes & Dimensions
Product description	Color temperature	Nominal luminous flux	Light color LED	Product weight
INSPECTION LAMP	5700 K	250 lm	White	105.00 g

	Length	Width	Height	LED module information
Product description				Number of LEDs per module
INSPECTION LAMP	67.0 mm	42.0 mm	45.0 mm	1

	Colors & materials	Lifetime Data	Additional product data	
Product description	Base color	Guarantee	Type of Battery	Number of included batteries
INSPECTION LAMP	Black / Orange	2 years	Rechargeable	1



		Capabilities	Certificates & standards	Logistical data
Product description	Scope of battery	Technology	IK Class	Watt hour per battery
INSPECTION LAMP	Yes	LED	IK08	16.70

	Environmental & Regulatory Information Information according Art. 33 of EU Regulation (EC) 1907/2006 (REACH)			
Product description	Candidate list substance 1	CAS No. of substance 1	Safe use instruction	Declaration no. in SCIP database
INSPECTION LAMP	Lead	7439-92-1	The identification of the Candidate List substance is sufficient to allow safe use of the article.	bdeca20c-87d7-47fc-a8d4-ed431387b196

## Product family datasheet

---

### Download Data

File	
	User instruction LEDinspect HEADTORCH 250
	User instruction GPRS_Safety symbols instructions

#### Legal advice

Application advice:

For more detailed application information and graphics please see product datasheet and user instruction.\*for precise conditions please refer to:

[www.osram.com/am-guarantee](http://www.osram.com/am-guarantee)

#### Application advice

For more detailed application information and graphics please see product datasheet.

#### Disclaimer

Subject to change without notice. Errors and omission excepted. Always make sure to use the most recent release.