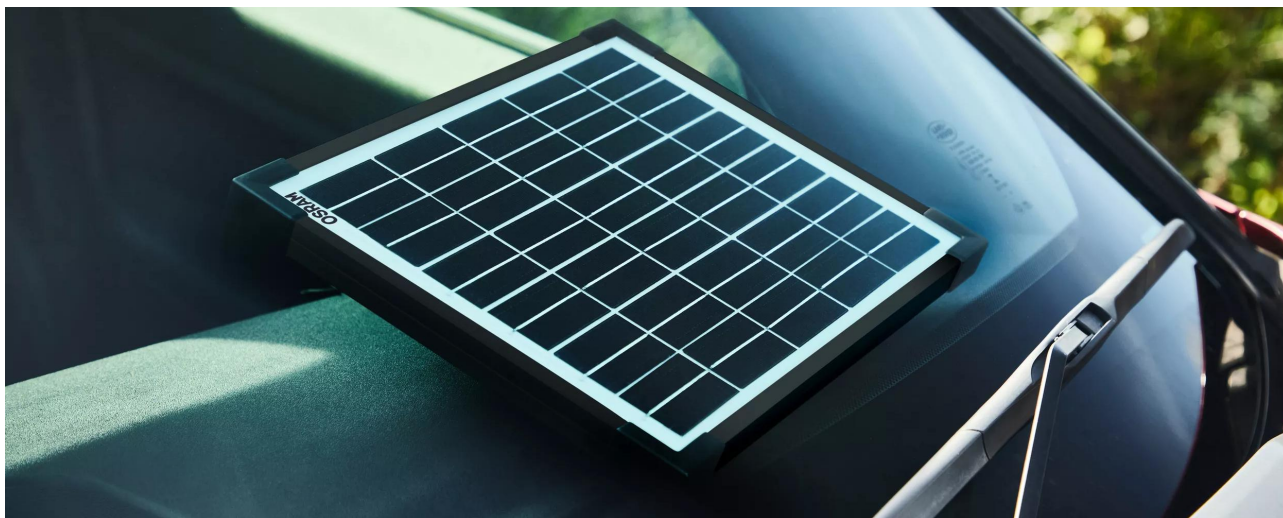


BATTERYcharge SOLAR 10W



Monocrystalline solar cells, providing up to 10W of power

Efficient, modern solar cells convert sunlight into electricity more effectively than traditional panels and allow quicker charging



Works in overcast conditions

Solar panels produce power even in unfavourable weather for year-round use



IP65 water resistance for placement outdoors

IP 65 water resistance allows the user to place the panel outside of the vehicle for optimized charging



Solar-powered battery maintenance for vehicles

Modern vehicles have a small but constant battery drain. They are packed full of electrical systems that are constantly working even when the ignition is off. Alarms, immobilisers, and lock monitoring are examples of systems running in the background that can cause the battery to discharge even when the vehicle is not being used. The OSP1000 is a solar powered battery maintainer for 12V vehicles -the low carbon, more environmentally friendly way to maintain your vehicle battery when not in use. Ideal for seasonally-used vehicles such as caravans, classic cars and motorcycles. Supplied with DC power plug and battery clips, works in overcast conditions and is IP 65 water resistant. Reverse polarity protection prevents damage if the clamps are connected to the incorrect battery poles.

Product family datasheet

Technical data


| | Product information | General Product Information | Electrical Data | Physical Attributes & Dimensions |
|--------------------------|---|-----------------------------|----------------------------|----------------------------------|
| Product description | Application (Category and Product specific) | Global order reference | Maintenance Charge (up to) | Length |
| BATTERY charge SOLAR 10W | Solar battery maintainer | OSP1000 | 0.56 A | 230.0 mm |

| | Dimensions & weight | | | |
|--------------------------|---------------------|--------|--------------------|---------------------|
| Product description | Width | Height | Power Cable Length | Clamps Cable Length |
| BATTERY charge SOLAR 10W | 18.0 mm | 364 mm | 3.0 m | 0.3 m |

| | Environmental & Regulatory Information Information according Art. 33 of EU Regulation (EC) 1907/2006 (REACH) | | | |
|--------------------------|---|------------------------|--|--------------------------------------|
| Product description | Candidate list substance 1 | CAS No. of substance 1 | Safe use instruction | Declaration no. in SCIP database |
| BATTERY charge SOLAR 10W | Lead | 7439-92-1 | The identification of the Candidate List substance is sufficient to allow safe use of the article. | a570e299-6401-44fc-a0e3-3fc5d6a063e9 |

Product family datasheet

Download Data

| File | |
|---|-----------------------------------|
|  | User instruction BATTERYcharge |

Application advice

For more detailed application information and graphics please see product datasheet.

Disclaimer

Subject to change without notice. Errors and omission excepted. Always make sure to use the most recent release.